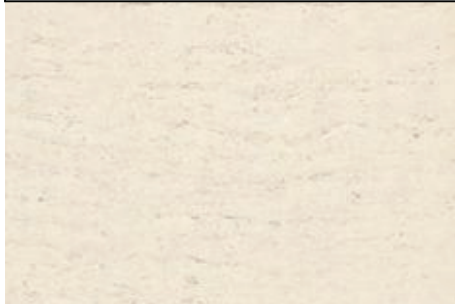


Cer-Stone Series – 300 X 600 / 600 X 600 (24" X 24")



Stone Like - Travertine White



Stone Like - Travertine Gold

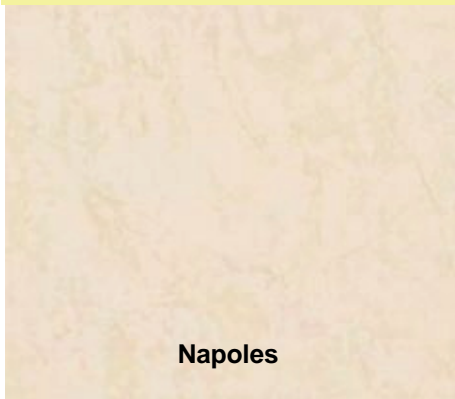


Stone Like - Crema Marfil

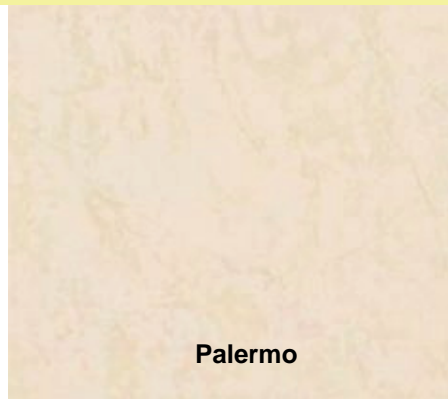


For a better reference, it is strongly suggested to request samples of this series.

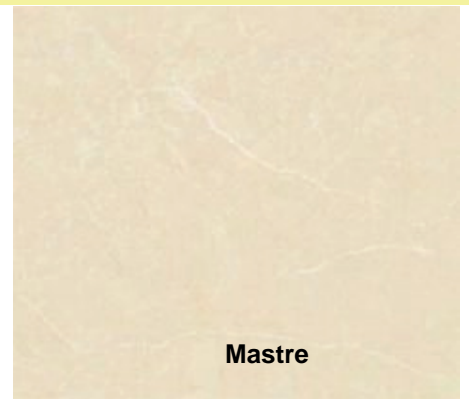
Soluble Salt Series—400 X 400 (16"), 500 X 500 (20"), 300 X 600 / 600 X 600 (24"), 800 X 800 (30")



Napoles



Palermo

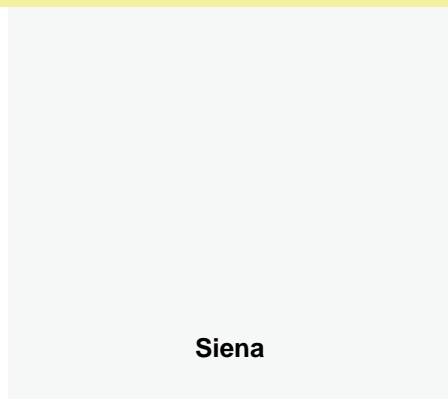


Mastre

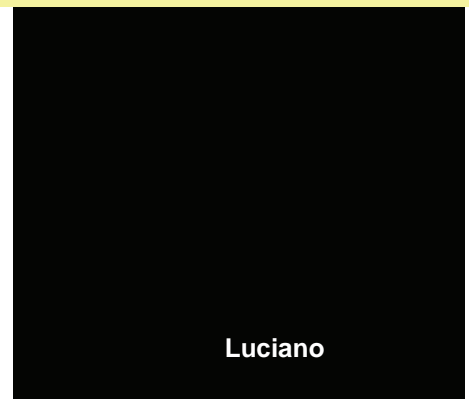
Plain Color – 400 X 400 (16"), 500 X 500 (20"), 300 X 600 / 600 X 600 (24"), 800 X 800 (30")



Baveno

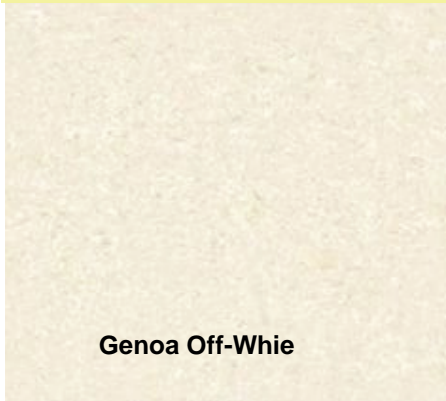


Siena

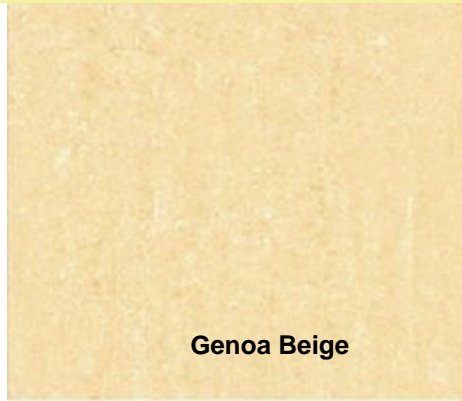


Luciano

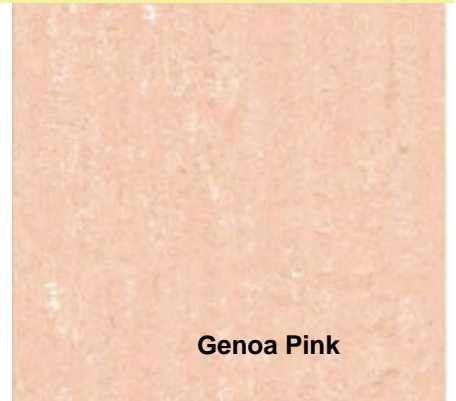
Double Loading – 300 X 600 / 600 X 600 (24”),



Genoa Off-White



Genoa Beige



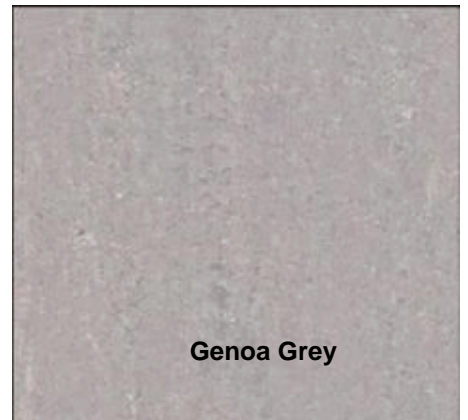
Genoa Pink



Genoa Dark Grey



Genoa Café



Genoa Grey

Bari Series – 100% Natural Shell – 300 X 600 / 600 X 600 (24”),

Cell Size: 15x15/20x20 (mm) - Full Size: 298x298 (mm) - Thickness: 4 (mm)



Barii A



Bari B

